

Isco USB Interrogator Cable Driver Installation

Introduction: The following are instructions for installing the drivers required for Isco USB Interrogator Cables on various Microsoft Windows operating systems.

Table of Contents

IMPORTANT NOTES	2
Section I. Microsoft Windows XP:	3
Section II. Windows XP (via Device Manager):.....	10
Section III. Vista:.....	18
Section IV. Vista (via Device Manager):.....	22
Section V. Windows 64 bit operating systems:.....	27
Section VI. Windows7:.....	33

IMPORTANT NOTES

Note 1: **** It is important that the USB cable be connected when instructed and not before. If the cable is connected to the PC out of sequence, the drivers will not load properly and the cable will not function.

When the USB cable is connected out of sequence, Windows attempts to auto load drivers and it will not install the proper Drivers. If this has occurred, the initial steps will need to be run once to uninstall the drivers Windows attempted to load and then the steps indicated within this document should be followed appropriately.

Note 2: The Drivers for these USB Interrogation cables are located on the Flowlink Installation CD. They are also automatically copied, in ZIP format, to the hard drive into the folder Flowlink installed in during the Flowlink Installation process. However, if needed, these drivers can also be downloaded at:

ftp://ftp.isco.com/download_software/Flow_Meter/Drivers_for_Isco_USB_Interrogation_Cables.zip

Section I. Microsoft Windows XP:

If any step in this process fails proceed to **Section II. Windows XP (via Device Manager).**

1. The drivers are located in [C:\Program Files\Flowlink 5.1\USB Driver\USB Driver.zip](#). Extract the zip file to that location and run setup.exe from [C:\Program Files\Flowlink 5.1\USB Driver\USB Driver\USB Driver\Standard Drivers](#). This copies the drivers to [C:\Program Files\Texas Instruments](#).



Figure 1: Driver Installation Progress

2. Accept the license agreement and click “Next”.



Figure 2: License Agreement

3. Click “Continue Anyway”.



Figure 3: Windows Logo Testing

4. Click “Continue Anyway”.



Figure 4: Windows Logo Testing

5. Click “Finish”.



Figure 5: Finish

6. **Plug the cable into the USB port on the computer.** The Windows Found New Hardware Wizard will appear, click “Install the software automatically (Recommended)”.



Figure 6: Found New Hardware Wizard

7. Click “Continue Anyway”.



Figure 7: Windows Logo Testing

8. Click "Finish" to complete installation of the TUSB3410 Device.



Figure 8: Finish

9. The Windows Hardware Wizard will appear to install the USB – Serial Port. Click “Install the software automatically (Recommended)”.



Figure 9: Found New Hardware Wizard

10. Click “Continue Anyway”.



Figure 10: Windows Logo Testing

11. Click “Finish” to complete the USB – Serial Port installation.



Figure 11: Finish

12. Open the Device Manager to verify the installation. To do this, right click on “My Computer” and select “Manage.”

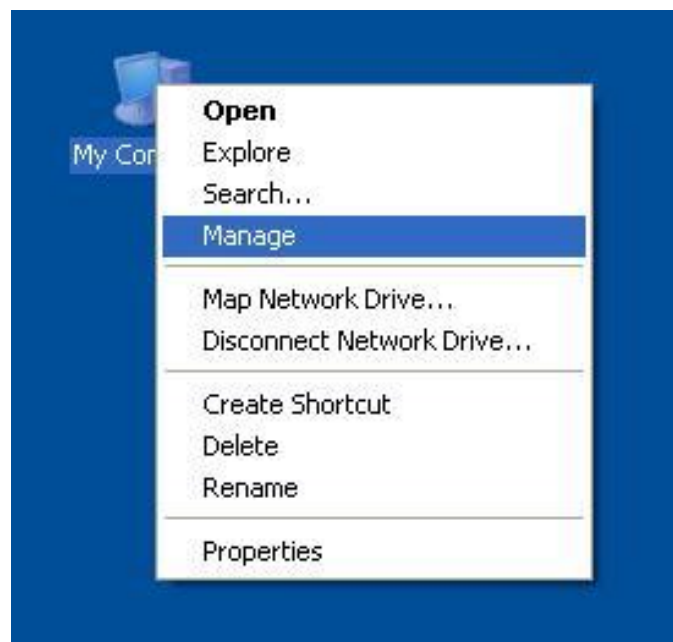


Figure 12: Opening Device Manager

13. A Computer Management window will open, click on Device Manager on the left side. Then, in the right side of the window, click on the plus sign in front of Ports to expand the list. There should be a “USB – Serial Port (COMX)” where X is the assigned COM port number. Open Flowlink and use this COM port to connect to Isco instruments.

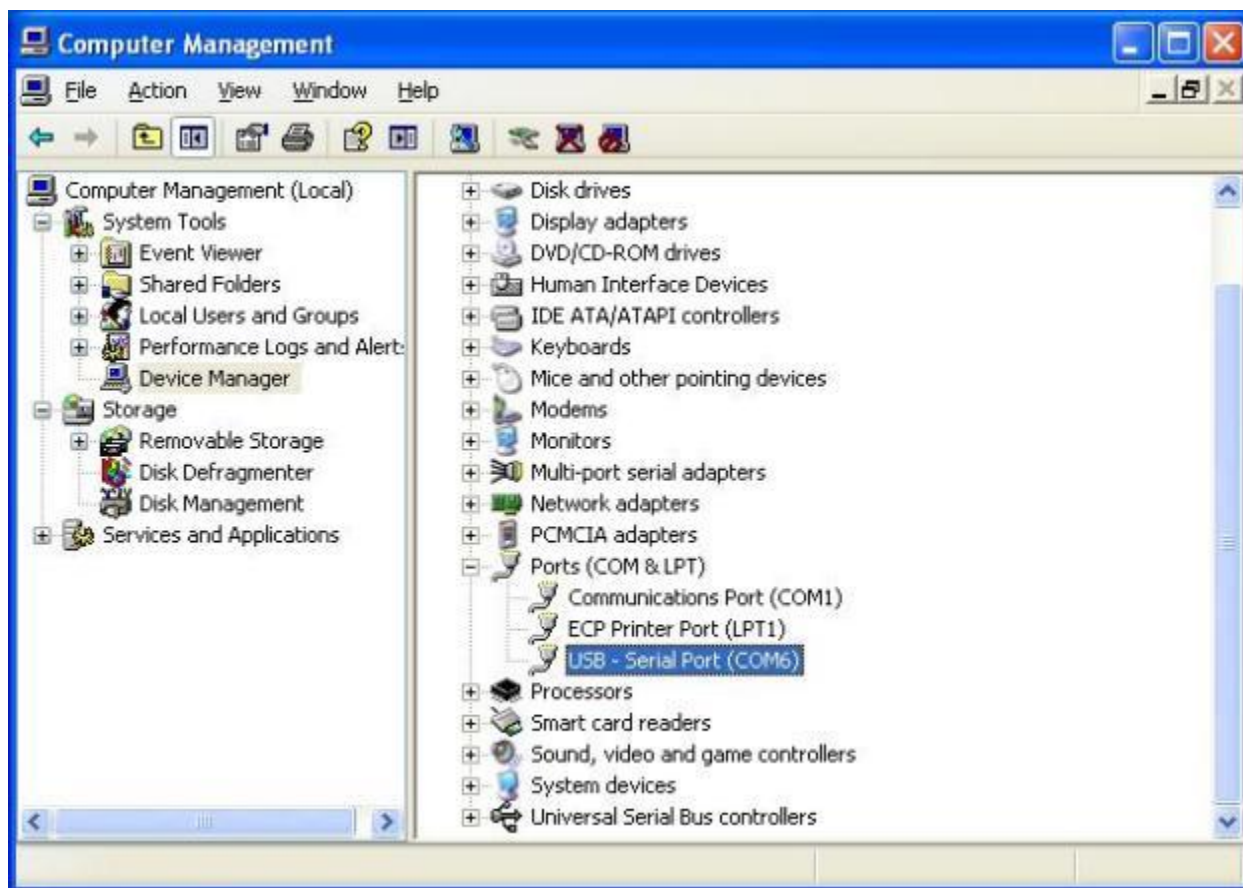


Figure 13: Device Manager

Section II. Windows XP (via Device Manager):

If the installation fails when using the Installation Wizard, follow these steps to install the drivers.

1. **Plug the cable into the USB port on the computer.**
2. Open the Device Manager by right clicking on “My Computer” and selecting Manage.



Figure 14: Opening Device Manager

3. Click on Device Manager in the left side of the window.

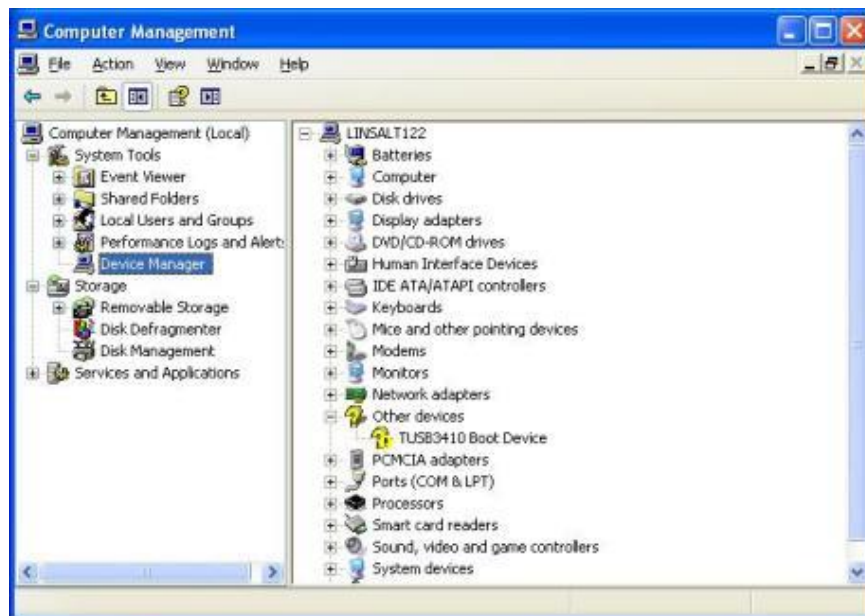


Figure 15: Device Manager

4. Right click on TUSB3410 Boot Device under Other devices and select “Update Driver”.



Figure 16: Device Manager

5. Select “Install from a list or specific location (Advanced)” and click Next.



Figure 17: Found New Hardware Wizard

6. Check the “Include this location in the search” checkbox and click Browse.

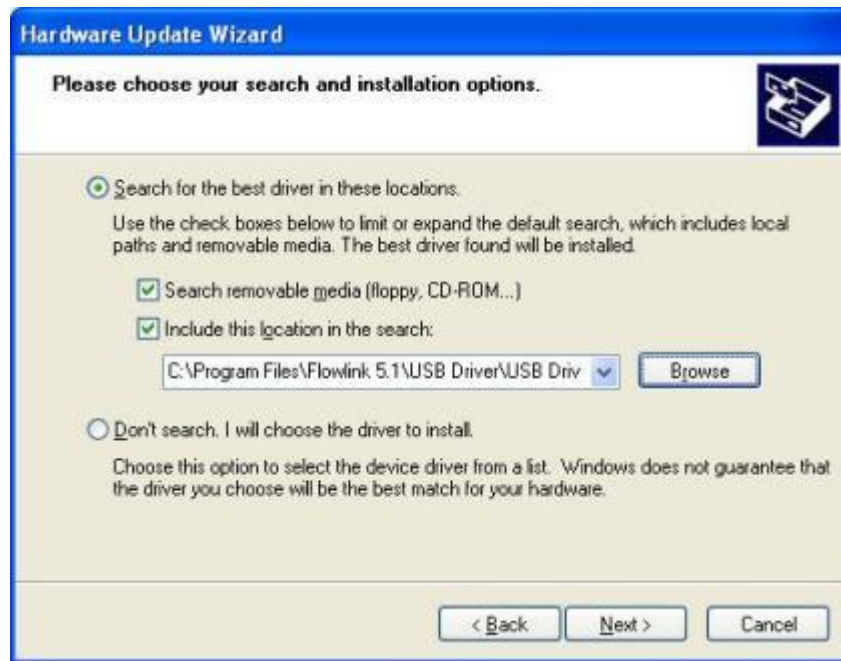


Figure 18: Search for Driver Software

7. Select the folder at location C:\Program Files\Flowlink 5.1\USB Driver\USB Driver\STANDARD DRIVERS\program files\Texas Instruments\TI3410XP and click OK. (Note: slight variances can occur in sub-folders depending upon the Extraction process)



Figure 19: Browse Window

8. Click Next.

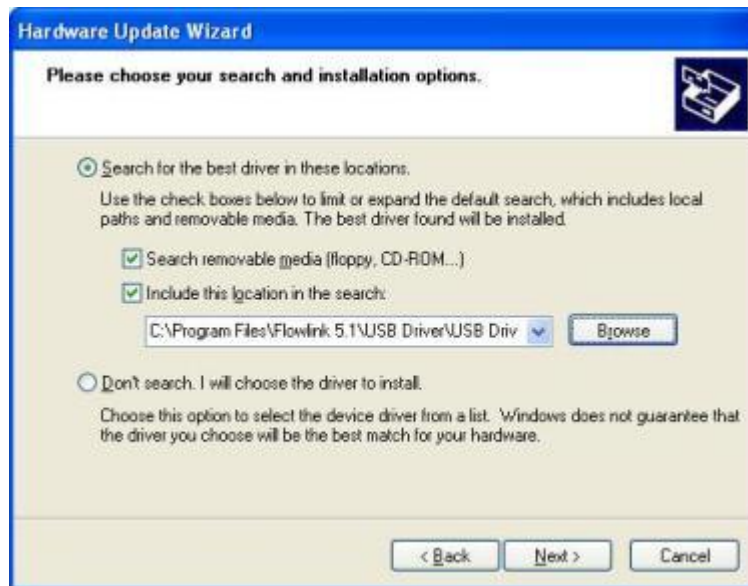


Figure 20: Search for Driver Software

9. Windows will begin the TUSB3410 Boot Device driver installation.

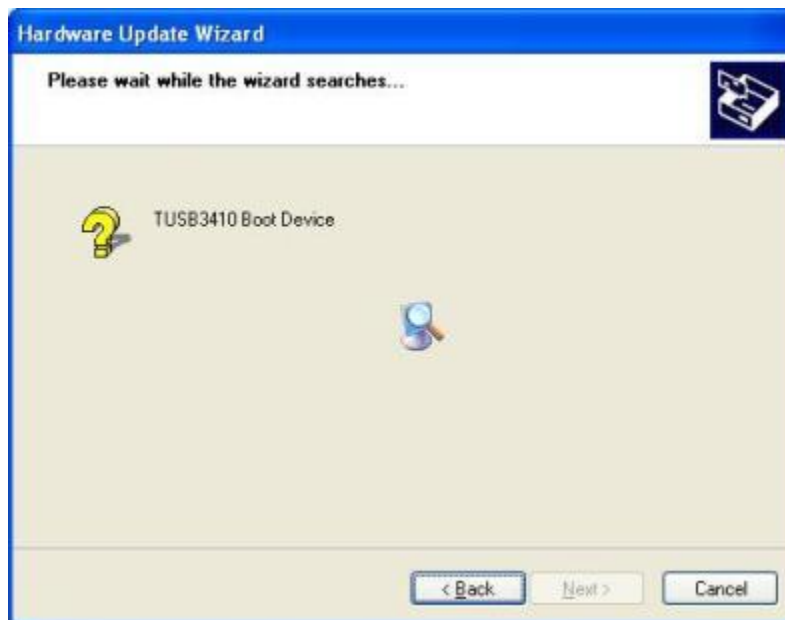


Figure 21: Installation Progress

10. Click “Continue Anyway”.



Figure 22: Windows Logo Testing

11. Click Finish to complete the TUSB3410 Device installation.



Figure 23: Finish

12. Windows Found New Hardware Wizard will appear to install the UMP Serial Port. Select “Install from a list or specific location (Advanced)” and click “Next”.



Figure 24: Found New Hardware Wizard

13. C:\Program Files\Flowlink 5.1\USB Driver\USB Driver\STANDARD DRIVERS\program files\Texas Instruments\TI3410XP should already be in the location box. If it is not, follow steps 5 and 6 to select it. Click “Next”.

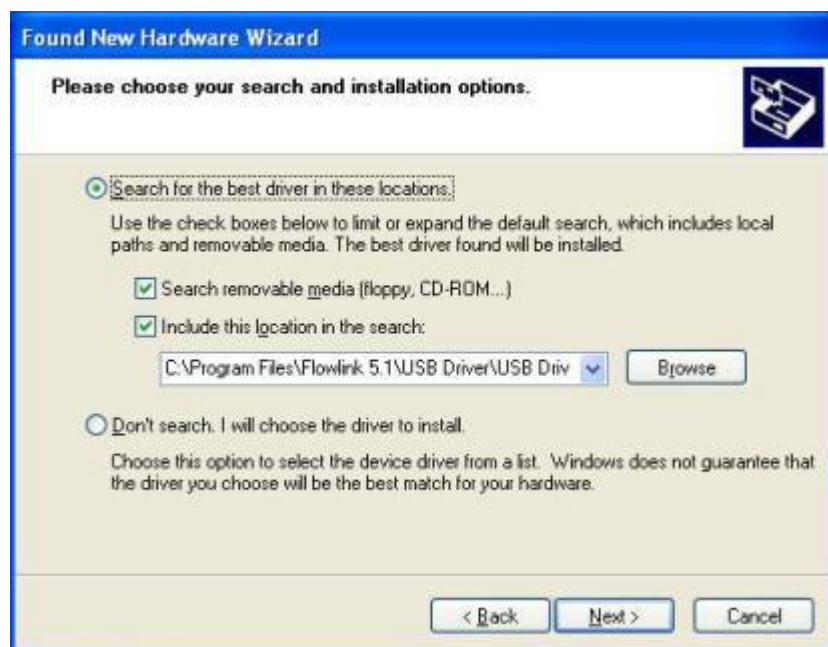


Figure 25: Search for Driver Software

14. The Texas Instruments UMP Serial Port driver installation will begin.

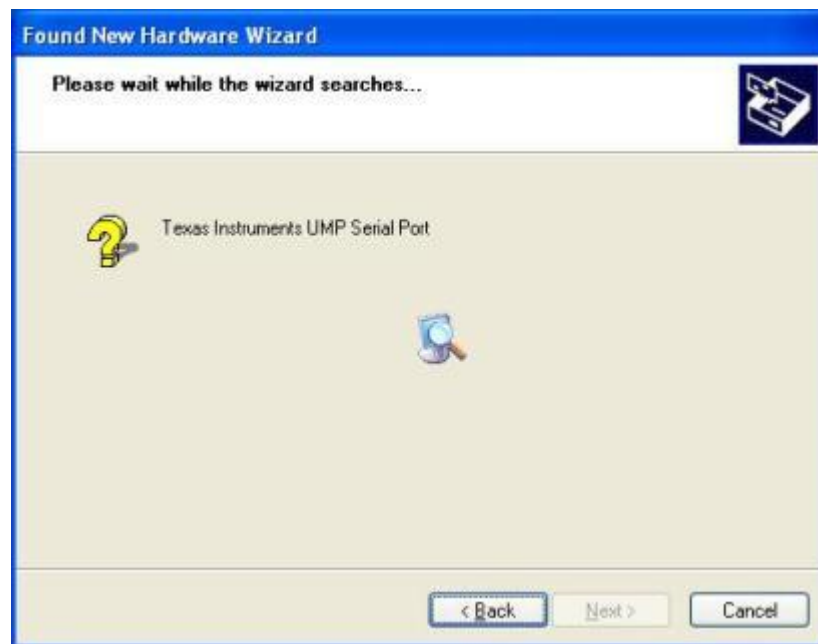


Figure 26: Installation Progress

15. Click “Continue Anyway”.



Figure 27: Windows Logo Test

16. Click Finish to complete the USB – Serial Port installation.



Figure 28: Finish

17. Under Ports in the Device Manager there should now be a “USB – Serial Port (COM#)” where # is the assigned COM port number. Open Flowlink and use this COM port to connect to Isco instruments.

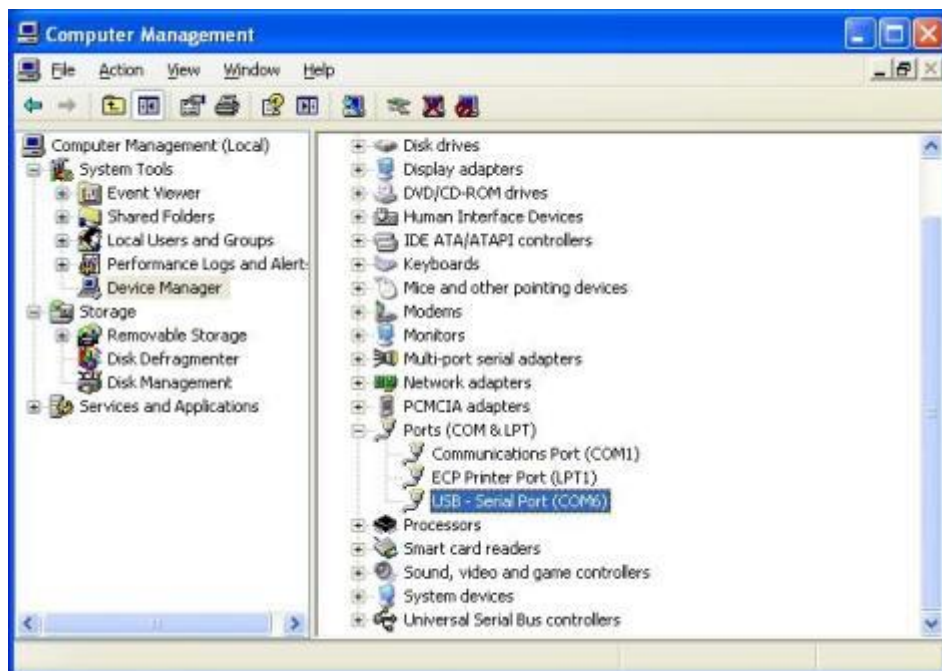


Figure 29: Device Manager

Section III. Vista:

If any step in this process fails, proceed to **Section IV. Vista (via Device Manager).**

1. The drivers are located in [C:\Program Files\Flowlink 5.1\USB Driver\USB Driver.zip](#). Extract the zip file to that location and run setup.exe from [C:\Program Files\Flowlink 5.1\USB Driver\USB Driver\USB Driver\Standard Drivers](#). This copies the drivers to [C:\Program Files\Texas Instruments](#).



Figure 30: Driver Installation Progress

2. Accept the license agreement and click “Next”.



Figure 31: License Agreement

3. Click “Install this driver software anyway”.



Figure 32: Windows Security

4. Click “Finish”.

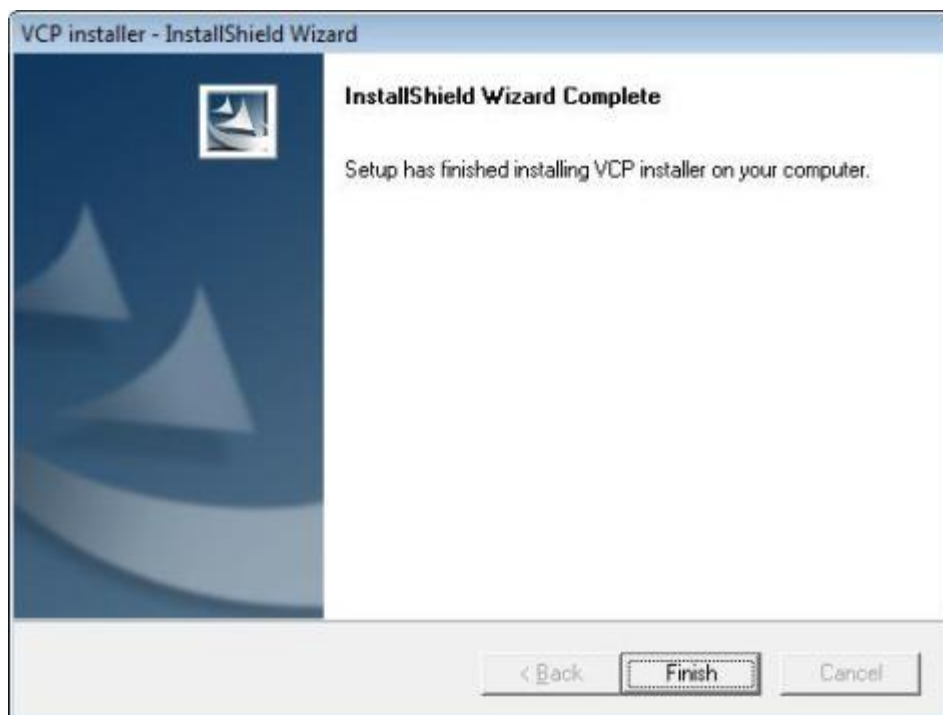


Figure 33: Finish

5. **Plug the cable into the USB port on the computer.** A bubble will display indicating that Vista is installing the device driver software.



Figure 34: Installing Software

6. Click on the bubble to view the installation status. When the installation is complete the window will display “Your devices are ready to use”.

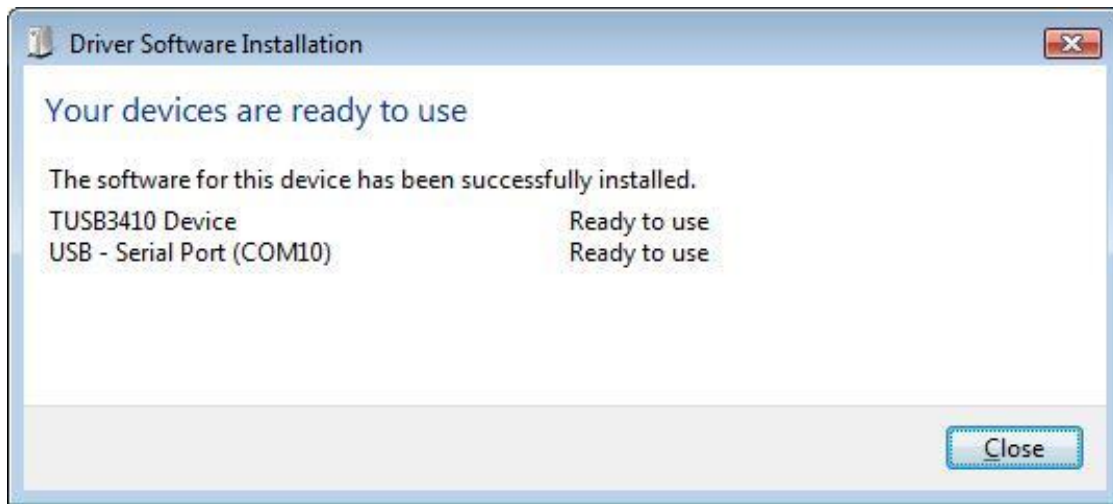


Figure 35: Installation Status

7. Open the Device Manager to verify the installation. To do this, right click on “Computer” in the Start menu and select Manage.

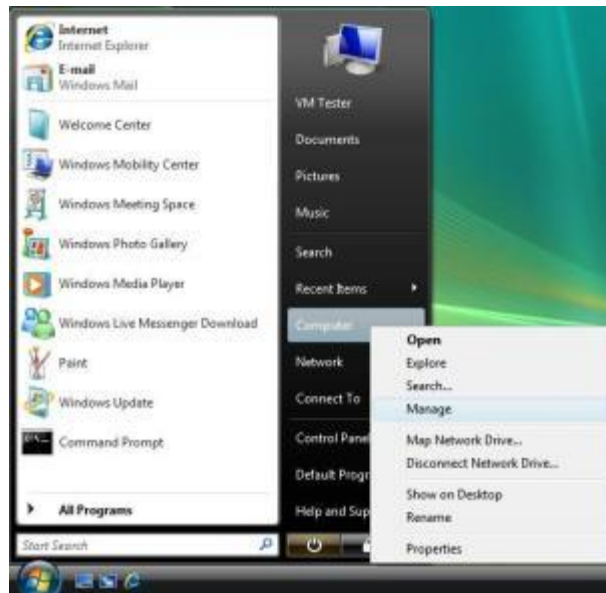


Figure 36: Opening Device Manager

8. A Computer Management window will open, click on Device Manager on the left side. Then, in the right side of the window, click on the plus sign in front of Ports to expand the list. There should be a “USB – Serial Port (COMX)” where X is the assigned COM port number. Open Flowlink and use this COM port to connect to Isco instruments.

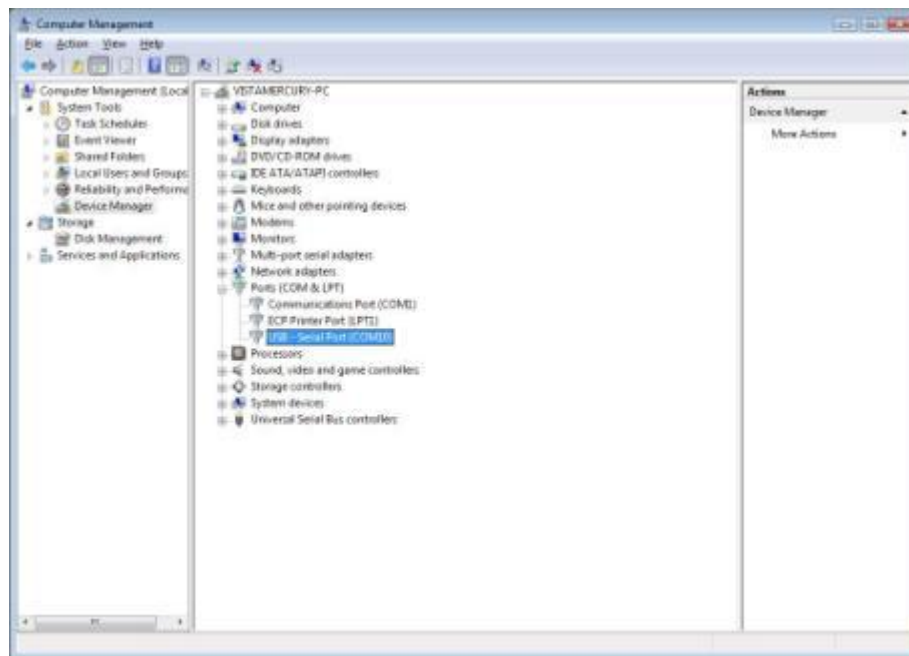


Figure 37: Device Manager

Section IV. Vista (via Device Manager):

If the installation fails when using the Installation Wizard, follow these steps to install the drivers.

1. Plug the cable into the USB port of the computer. A Windows Found New Hardware wizard will appear. Click “[Locate and install driver software \(recommended\)](#)”.



Figure 38: Found New Hardware Wizard

2. Windows will search the internet for the drivers.



Figure 39: Windows Update

3. Windows will ask that the installation disc be inserted. Click on “**I don’t have the disc. Show me other options.**”

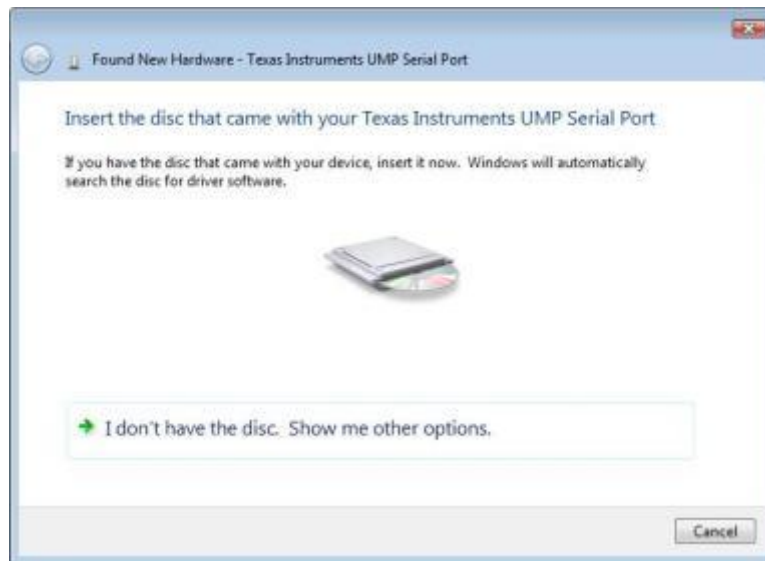


Figure 40: Driver Installation

4. Windows will search Program Files for the drivers but may not find them. If it does not find them click “**Locate and install driver software manually**”.

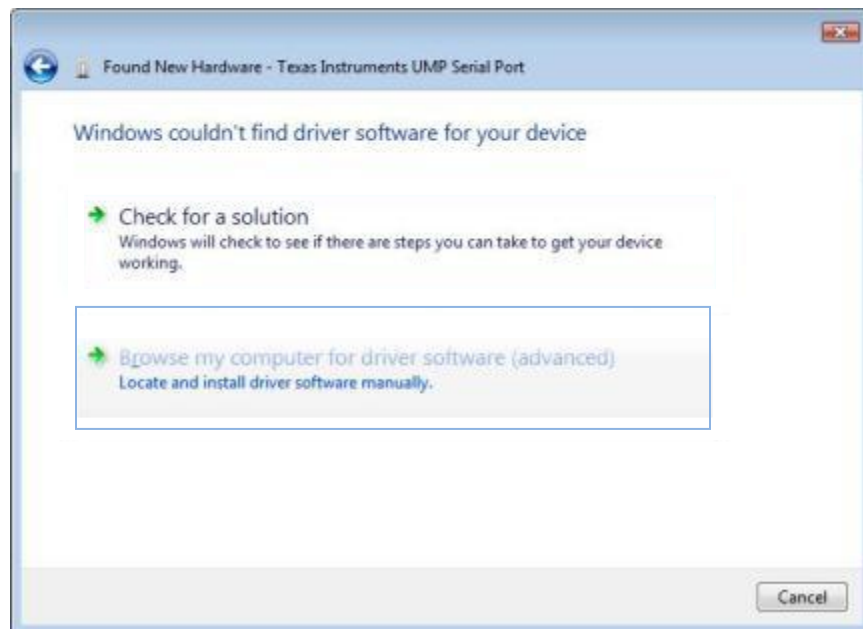


Figure 41: Locate Software Manually

5. Click “Browse” to locate drivers.

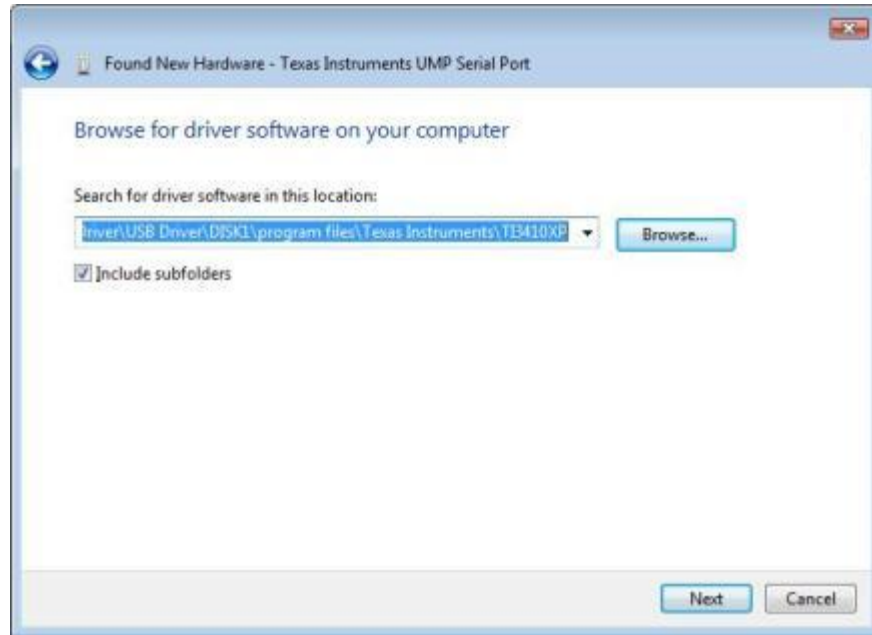


Figure 42: Browse for Drivers

6. Select the folder at [C:\Program Files\Flowlink 5.1\USB Driver\USB Driver\USB Driver\Standard Drivers\program files\Texas Instruments\TI3410XP](#) and click OK.

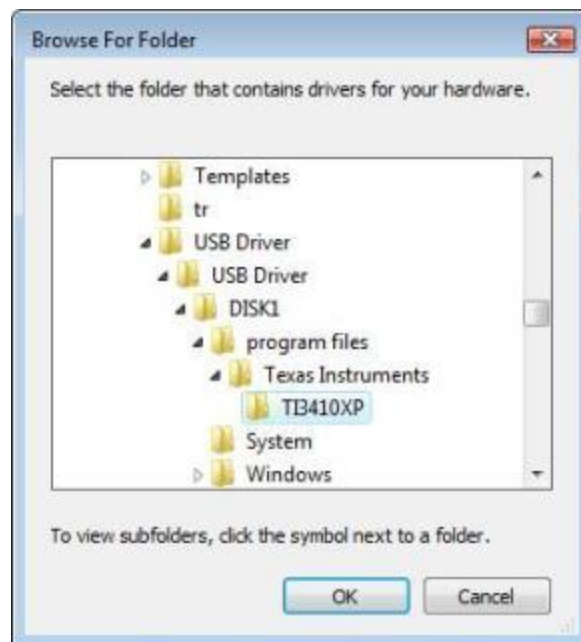


Figure 43: Select Folder

7. Click “Next”.

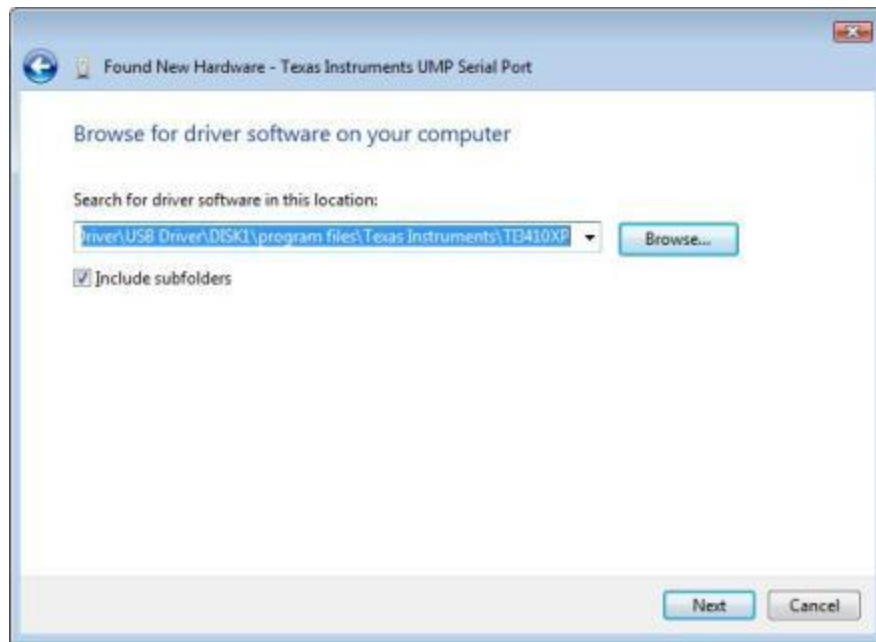


Figure 44: Browse for Driver Software

8. Click “Install this driver software anyway”.

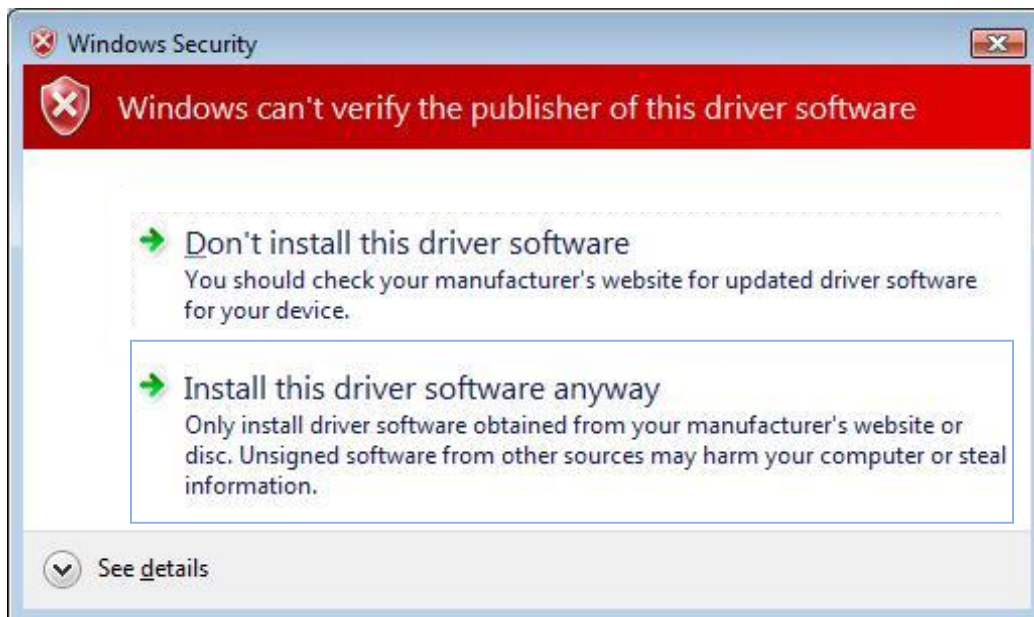


Figure 45: Windows Security

9. Windows will install the driver software.



Figure 46: Installation Complete

Section V. Windows 64 bit operating systems:

Use the following steps when using either Windows Vista or Windows XP, 64 bit operating systems.

1. To install the TUSB3410 VCP Driver, run setup.exe located in the x64 installation media.

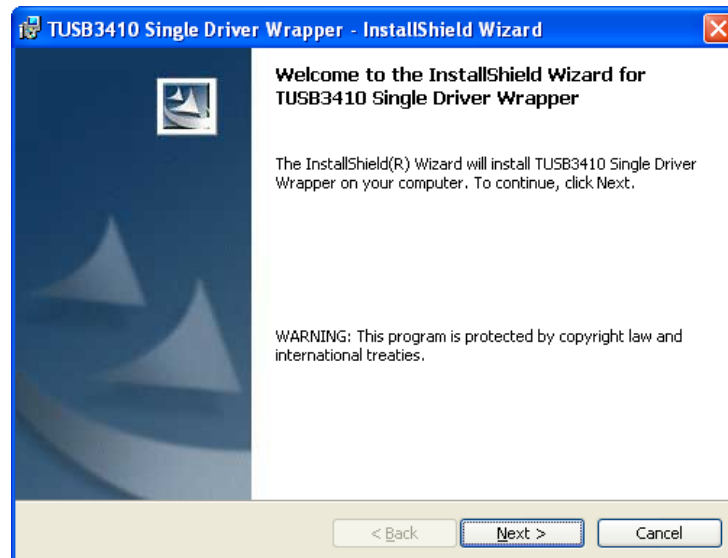


Figure 1: TUSB3410 Install Shield

2. Accept the license agreement and click “Next”.

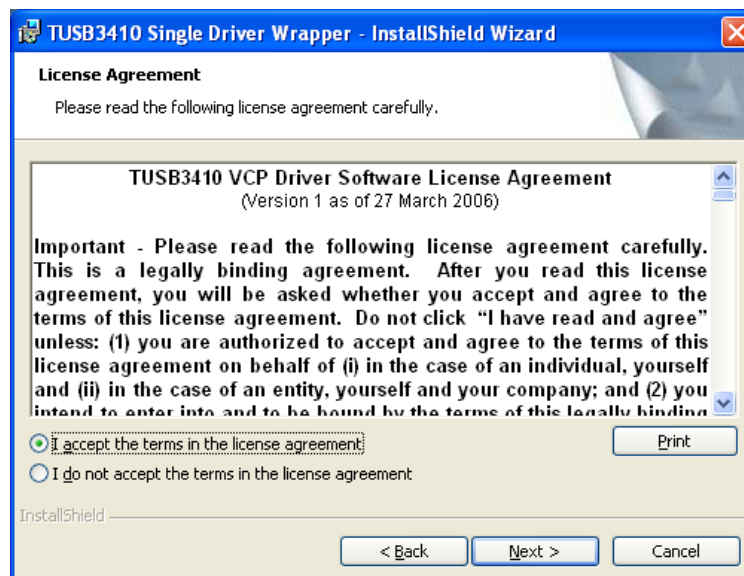


Figure 2: TUSB3410 VCP License agreement

3. Click “Next” to use the default install location.

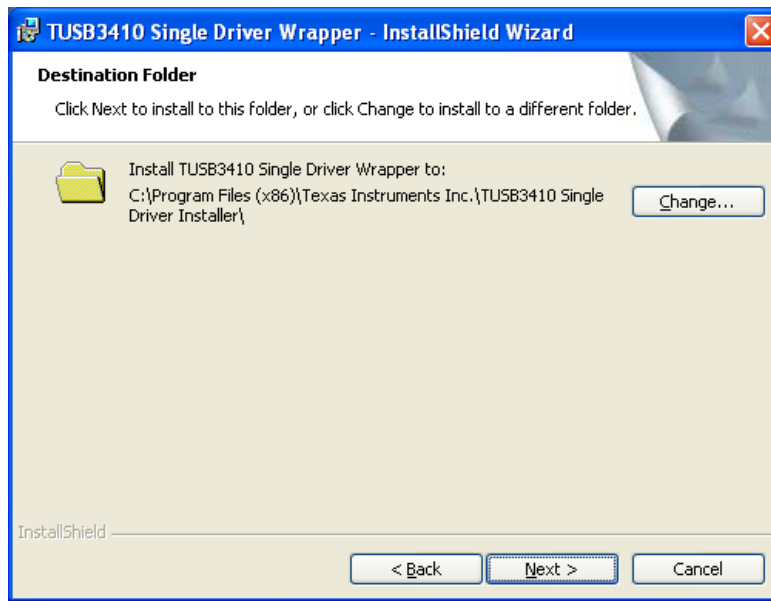


Figure 3: TUSB3410 Driver location

4. Click “Install” to install the TUSB3410 drivers.

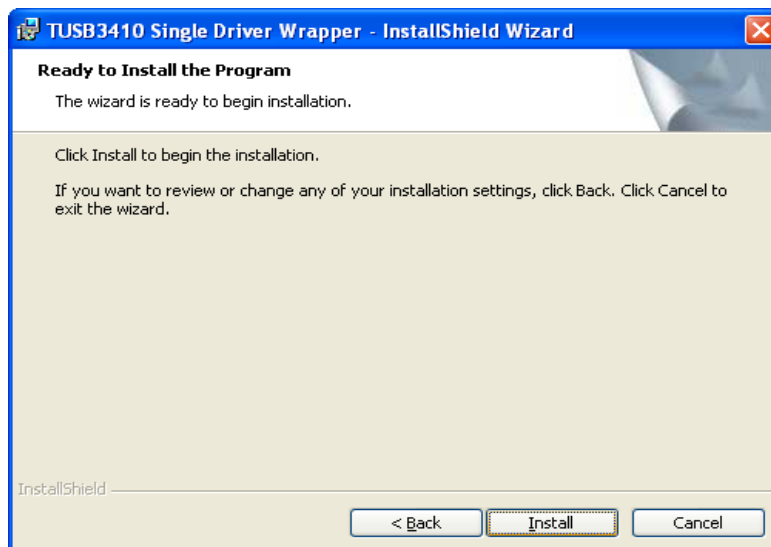


Figure 4: TUSB3410 Ready to install

5. Wait for the driver install to complete.

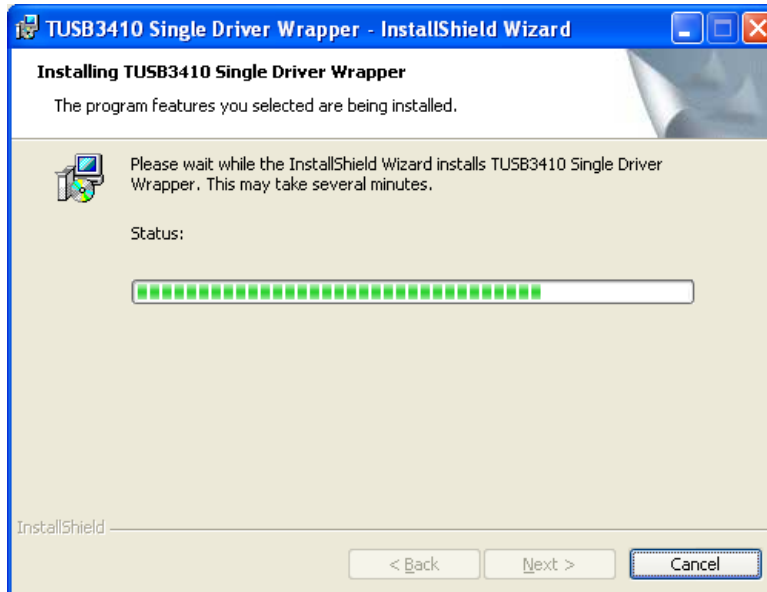


Figure 5: Driver install progress

6. Click "Finish" to complete installation of the TUSB3410 VCP single drivers.

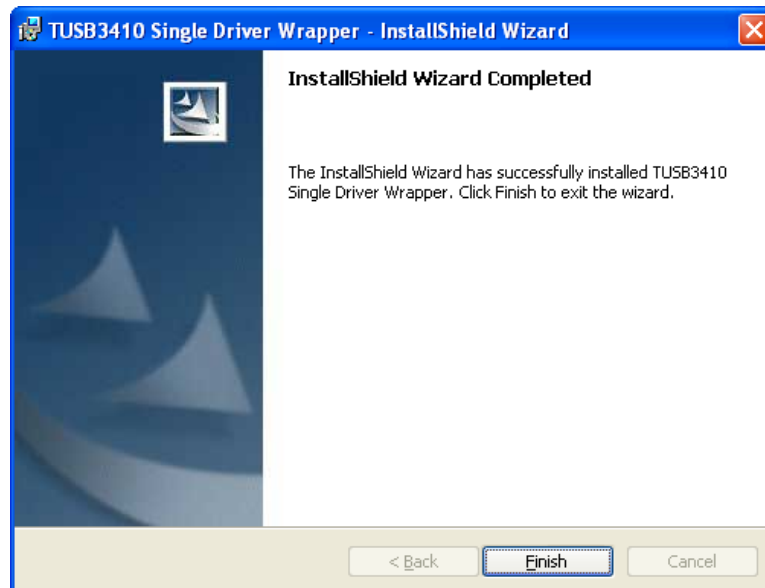


Figure 6: Installation complete

7. **Plug the cable into the USB port on the computer.**
8. When finished, there should be a “TUSB3410 Device (COM#)” where # is the assigned COM port number. Open Flowlink and use this COM port to connect to Isco instruments.

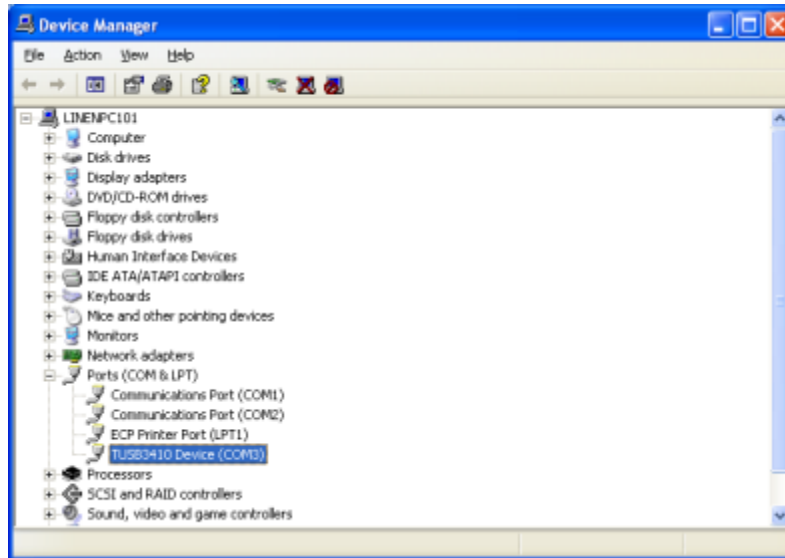


Figure 7: TUSB3410 Device Manager.

9. If you see a warning next to the USB device, continue to step 10.

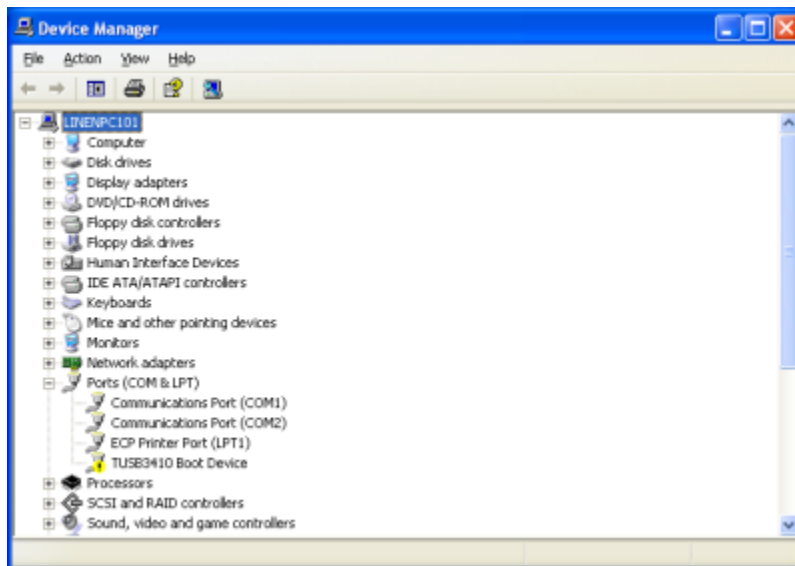


Figure 8: TUSB3410 COM port is not assigned.

10. Right click on the USB device and select update driver. Select “[Install from a specific location.](#)”

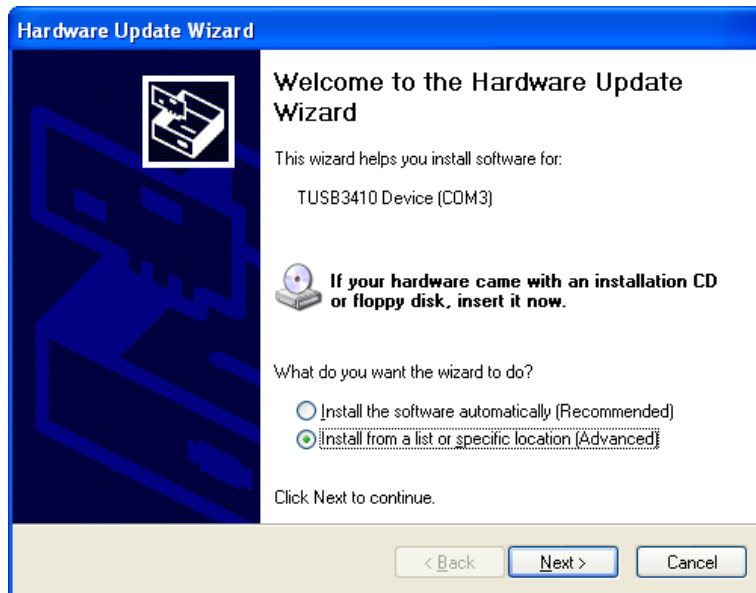


Figure 9: TUSB3410 Hardware update.

11. Browse to [C:\Program Files \(x86\)\Texas Instruments Inc\TUSB3410 Single Driver Installer\Standard Drivers\Windows\tiinst\TUSB3410\XP64](#), (“[Vista64](#)” IF installing on a 64 Bit Vista machine). The “Standard Drivers” directory will automatically load when you run the Setup.exe from the initial setup.

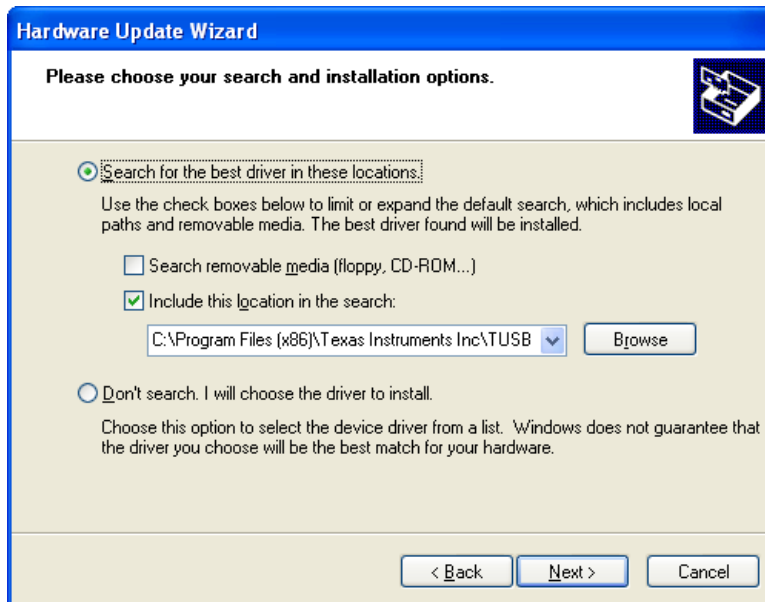


Figure 10: TUSB3410 Hardware update options.

12. Wait for the device installation.

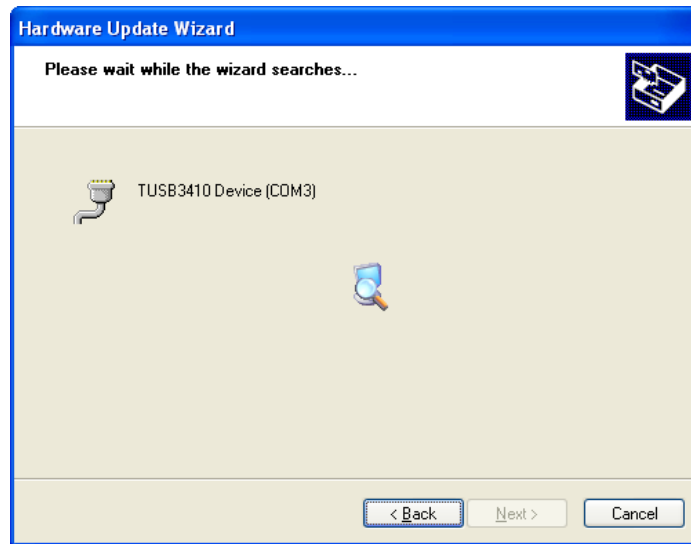


Figure 11: TUSB3410 Hardware updates installation.

13. When finished, there should be a “TUSB3410 Device (COM#)” where # is the assigned COM port number. Open Flowlink and use this COM port to connect to Isco instruments.

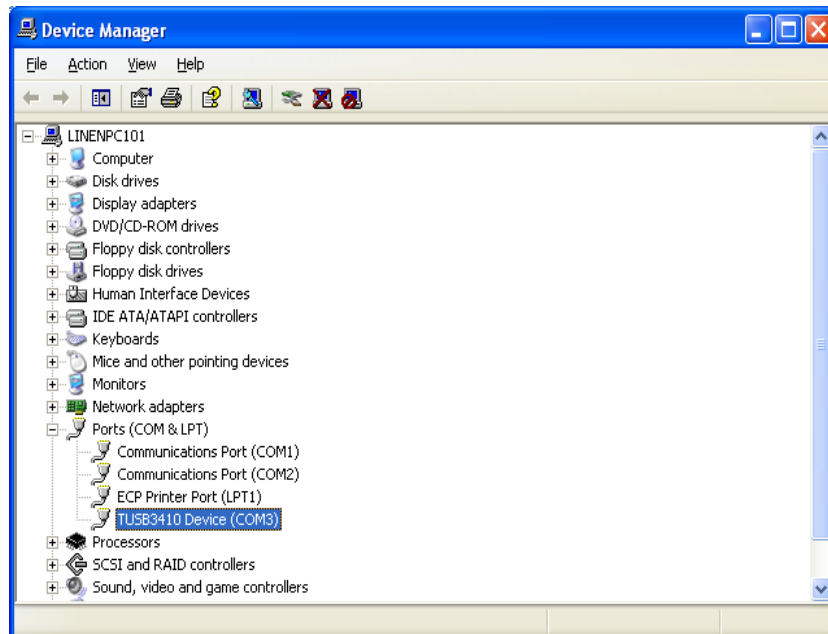
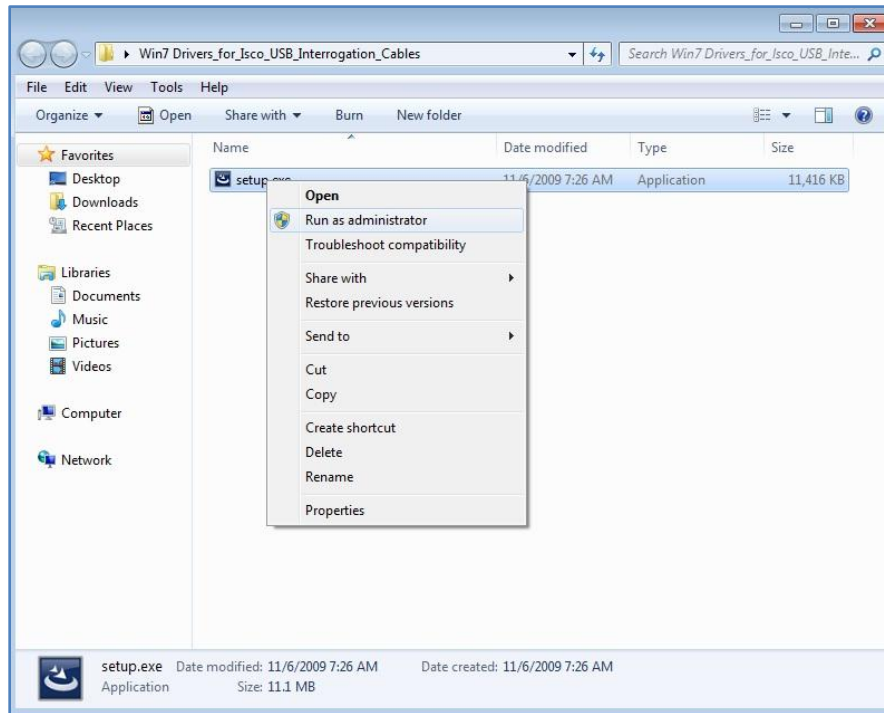


Figure 12: TUSB3410 Hardware installed

Section VI. Windows7 :

1. The drivers are located in [C:\Program Files\Flowlink 5.1\USB Driver\USB Driver.zip](#). Extract the zip file to that location and run setup.exe from [C:\Program Files\Flowlink 5.1\USB Driver\USB Driver\USB Driver\Win 7](#) as Administrator. To do this, right click on the file and select “Run as administrator”.



2. Click “Next” to proceed with installation.



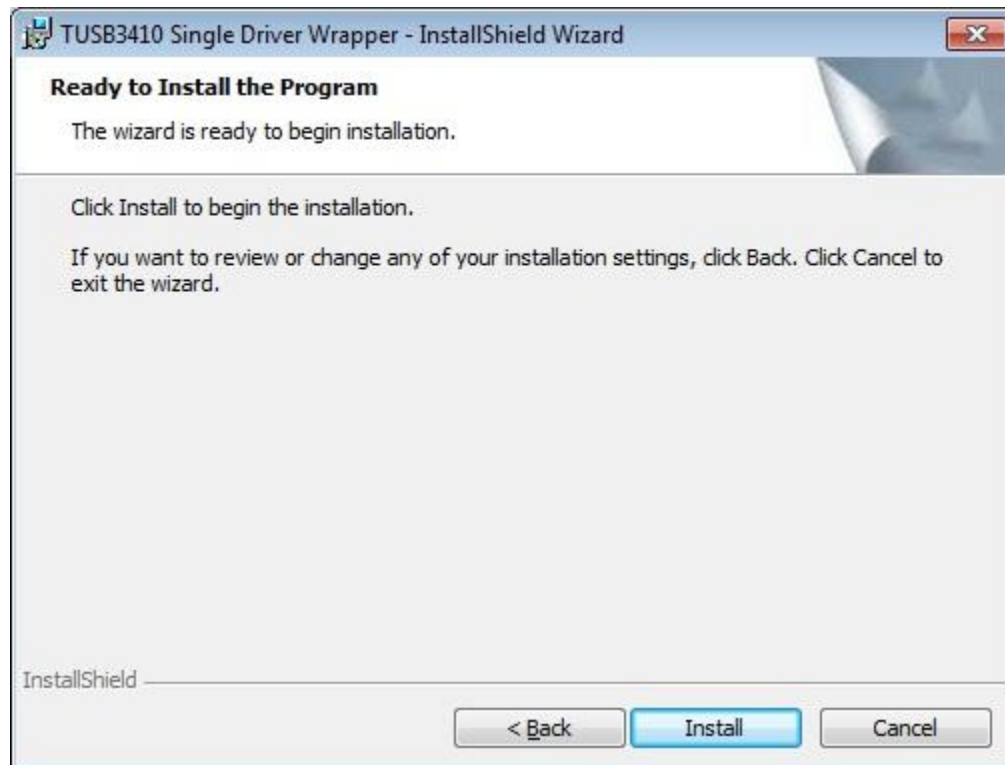
3. Accept the terms of the license agreement and click “Next”.



4. Click “Next” to proceed with installation.



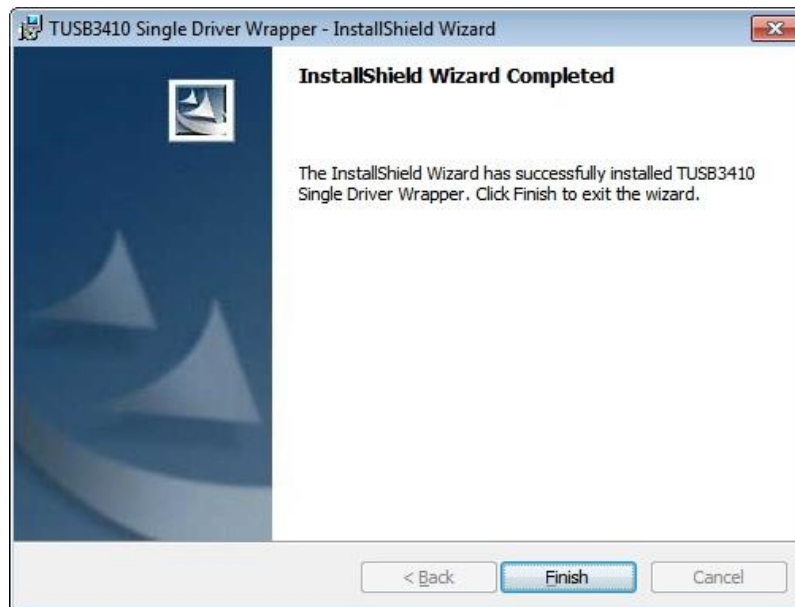
5. Click "Install".



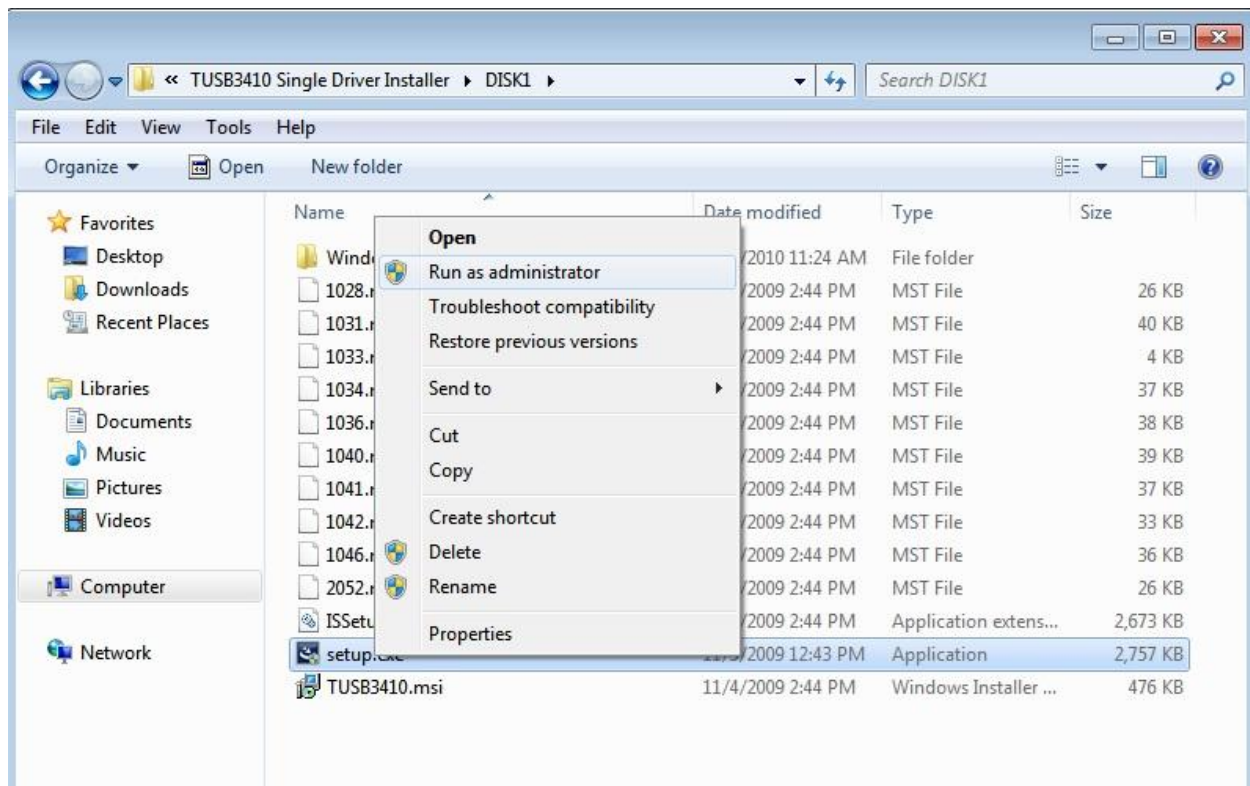
6. A status window will display the installation progress.



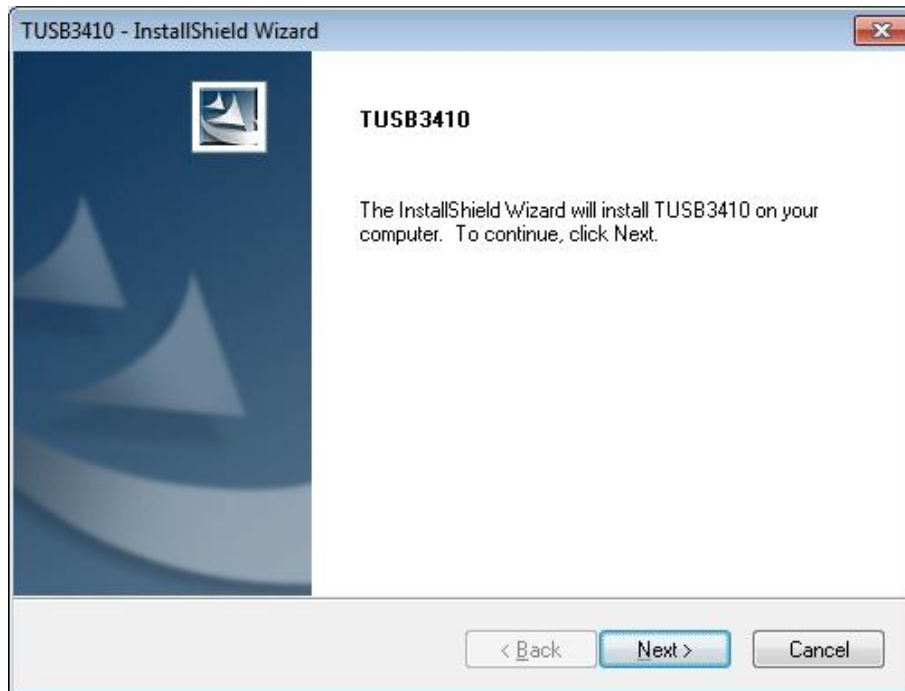
- Click "Finish" to complete the TUSB3410 Single Driver Wrapper installation.



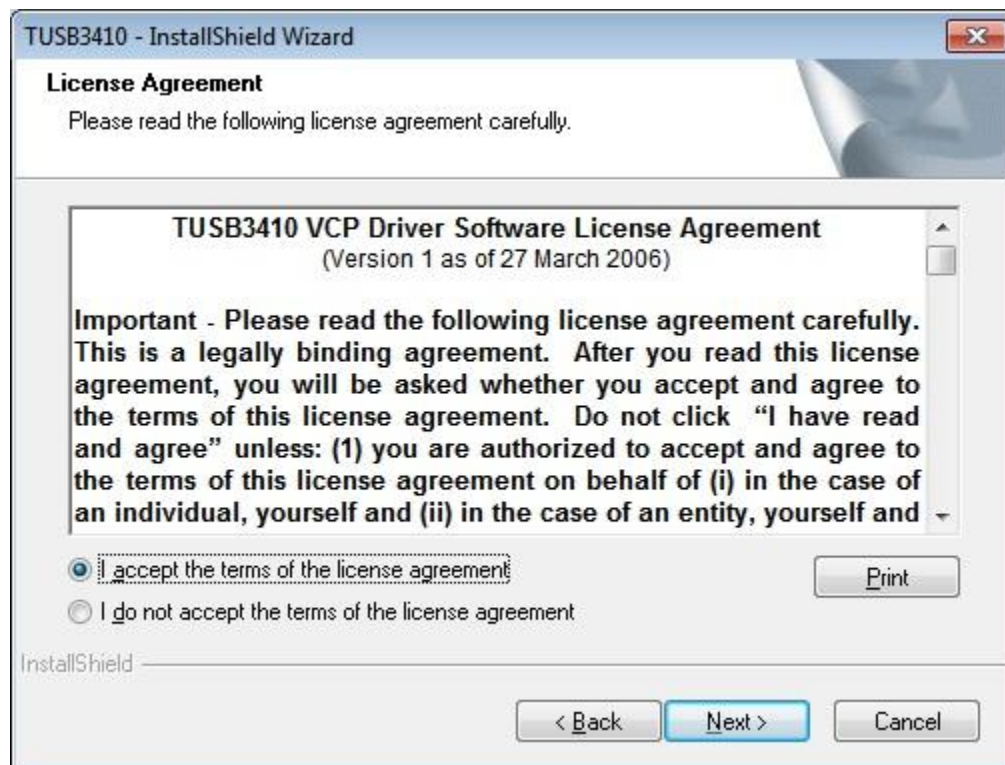
- The above steps copied the drivers to [C:\Program Files\Texas Instruments](#). Open Computer and browse to [C:\Program Files\Texas Instruments Inc\TUSB3410 Single Driver Installer\DISK1\](#). Right click on setup.exe and select "Run as administrator".



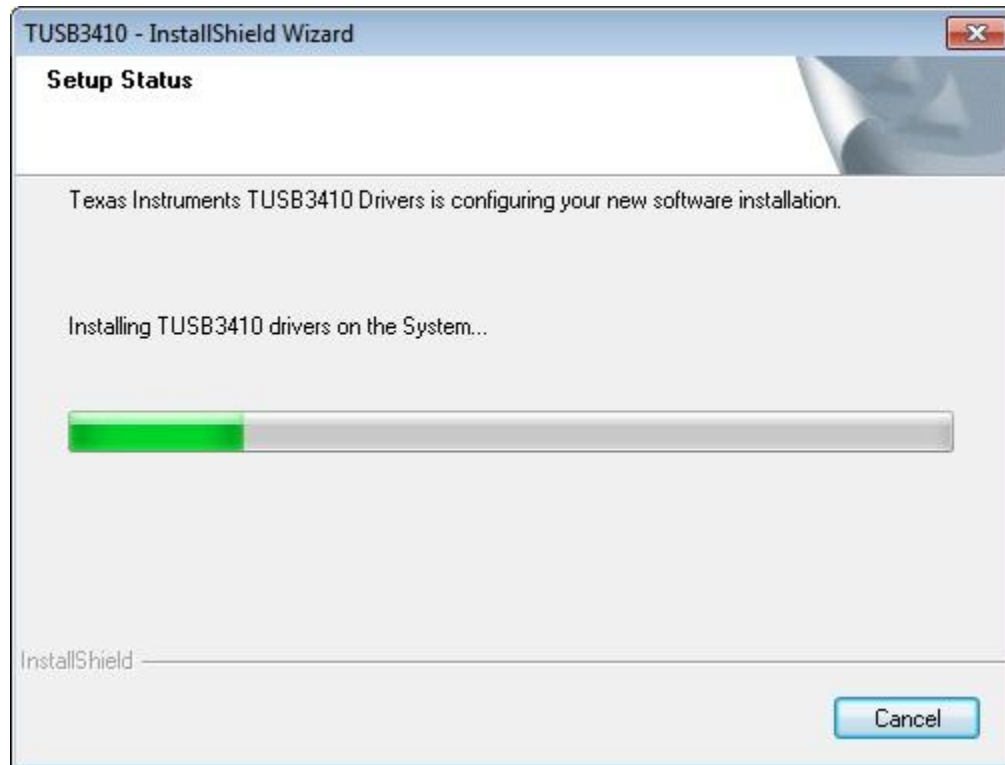
9. Click “Next” to proceed with installation.



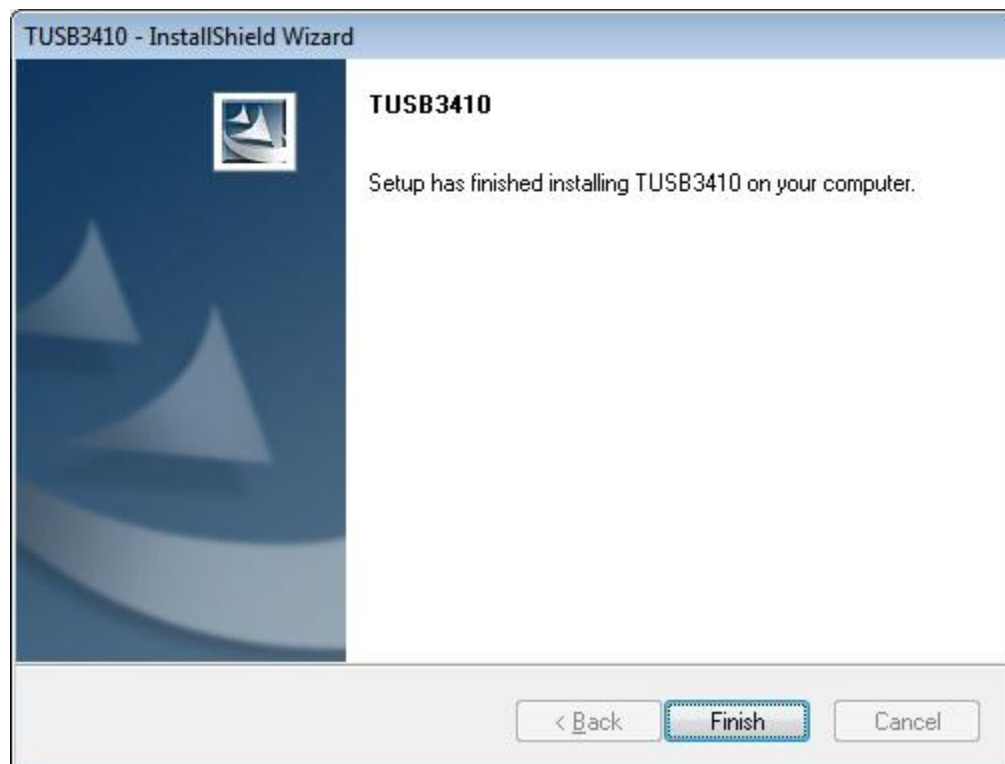
10. Accept the terms of the license agreement and click “Next”.



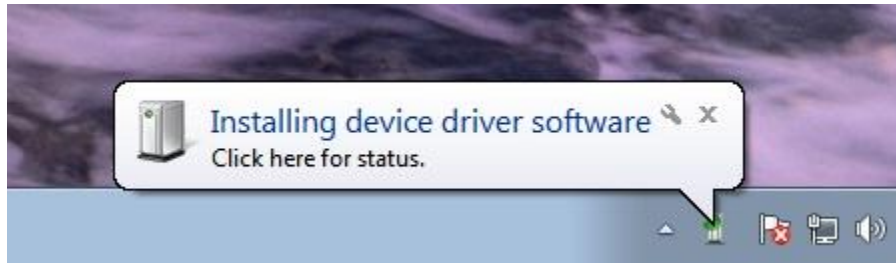
11. A status window will display the installation progress.



12. Click "Finish" to complete installation.



13. Plug USB cable into computer. A status bubble in the lower right corner of the screen will indicate that the driver software is being installed.



14. Click on the status bubble to view driver installation. When the installation is complete, the assigned COM port is displayed. Use this port to connect via Flowlink.

